





THE NEXT FIVE YEARS...

# THE FIVE YEAR VISION

- New Facilities - Mentivity Community Hub 1 & 2
- Mentivity Free School
- Charity CIO Formation
- Full-Time Alternative Provision - Key Stage 2, 3 & 4
- Contracts and Security - Solidify the Brand
- Increased Funding Streams
- Increased Partnership Work - ACN, The Wall of Entertainment, Goldman Sachs, Met Police, Croydon Council
- To Become Fully Embedded within the Community
- Driven by Youth - Advisory Board



THE MENTIVITY YOUTH HUB  
"A PLACE AND SPACE FOR ALL"

MENTIVITY COMMUNITY HOUSE & MENTIVITY COMMUNITY HUB





MENTIVITY YOUTH HUB

# THE VISION

- To Be Driven by Youth - Youth Advisory Board
- To Create a Safe, Nurturing Space for Our Local Youth and Wider Community
- To Expand Horizons Holistically Through Our Offer
- Increased Intergenerational Mentoring & Activities
- Further Education, Employment, Training, Apprenticeships and Mentorship

# Mentivity Community House - Burgess Park

- Stand-alone building and facility situated in Burgess Park next to Peckham BMX
- Redevelopment agreed with several CSR developers to create the Mentivity Community House - Anticipated Completion - September 2022
- Redevelopment will create: Podcast studio, music studio, community living room, industrial kitchen, cafe space with decking, landscaped communal garden, outdoor furniture, outdoor work space, outdoor kitchen
- Local community membership linked to usage. Membership will require members to volunteer time to support the local community in line with Mentivity philosophy
- Aim is to create a sustainable business model and offer in line with exponential social value return



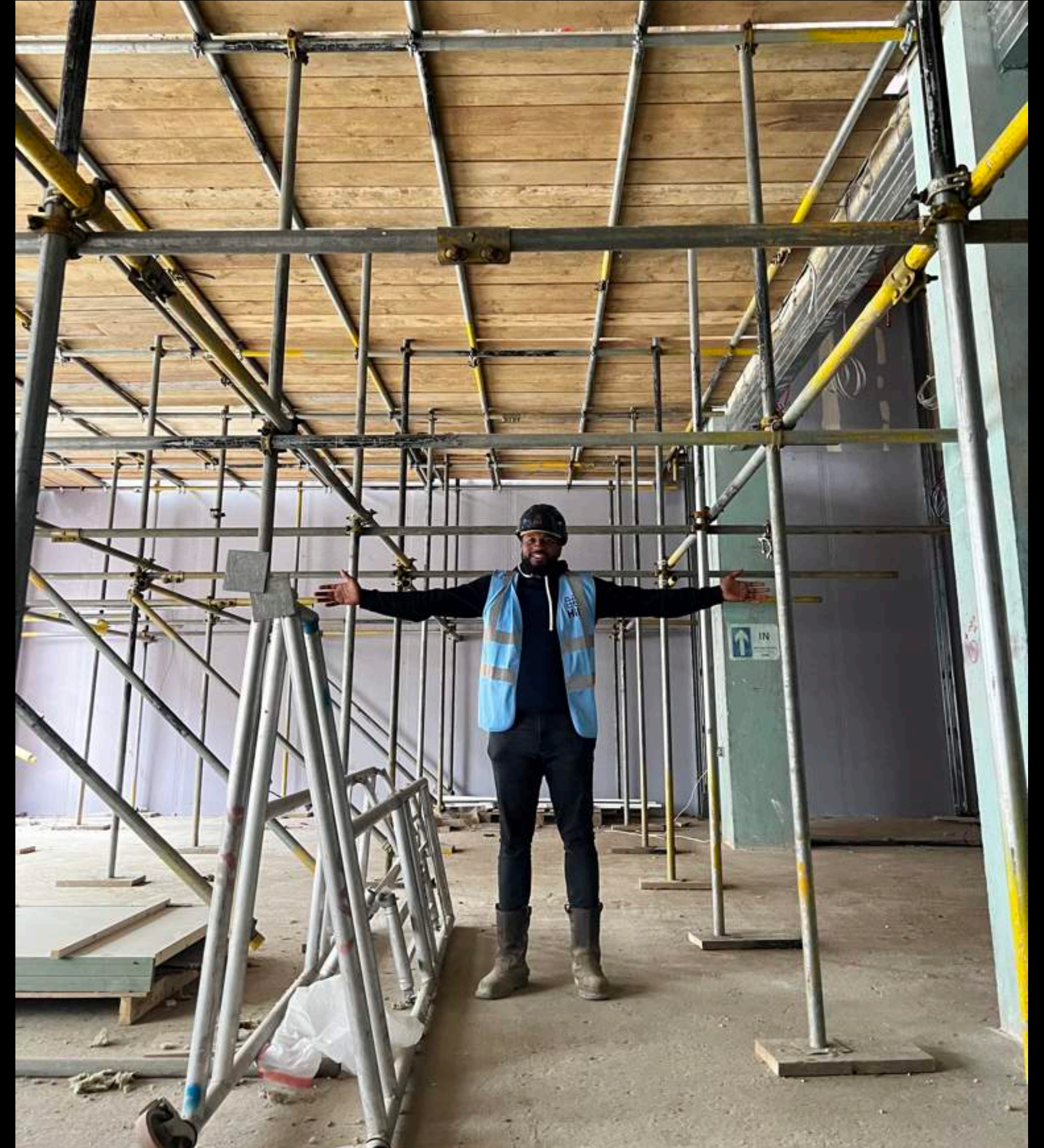
# Mentivity Community Hub - Westmoreland Road

This is a stand-alone facility situated on the ground floor of an urban block. Located on Westmoreland Street (just off of the Walworth Road) has dual aspect: the front onto the new pocket park and the rear to an internal courtyard.

Comprises a total 215sqm floor area, with a double height hall, office space and ancillary spaces (WCs and kitchenette). It has the potential to be extended with a Mezzanine level.

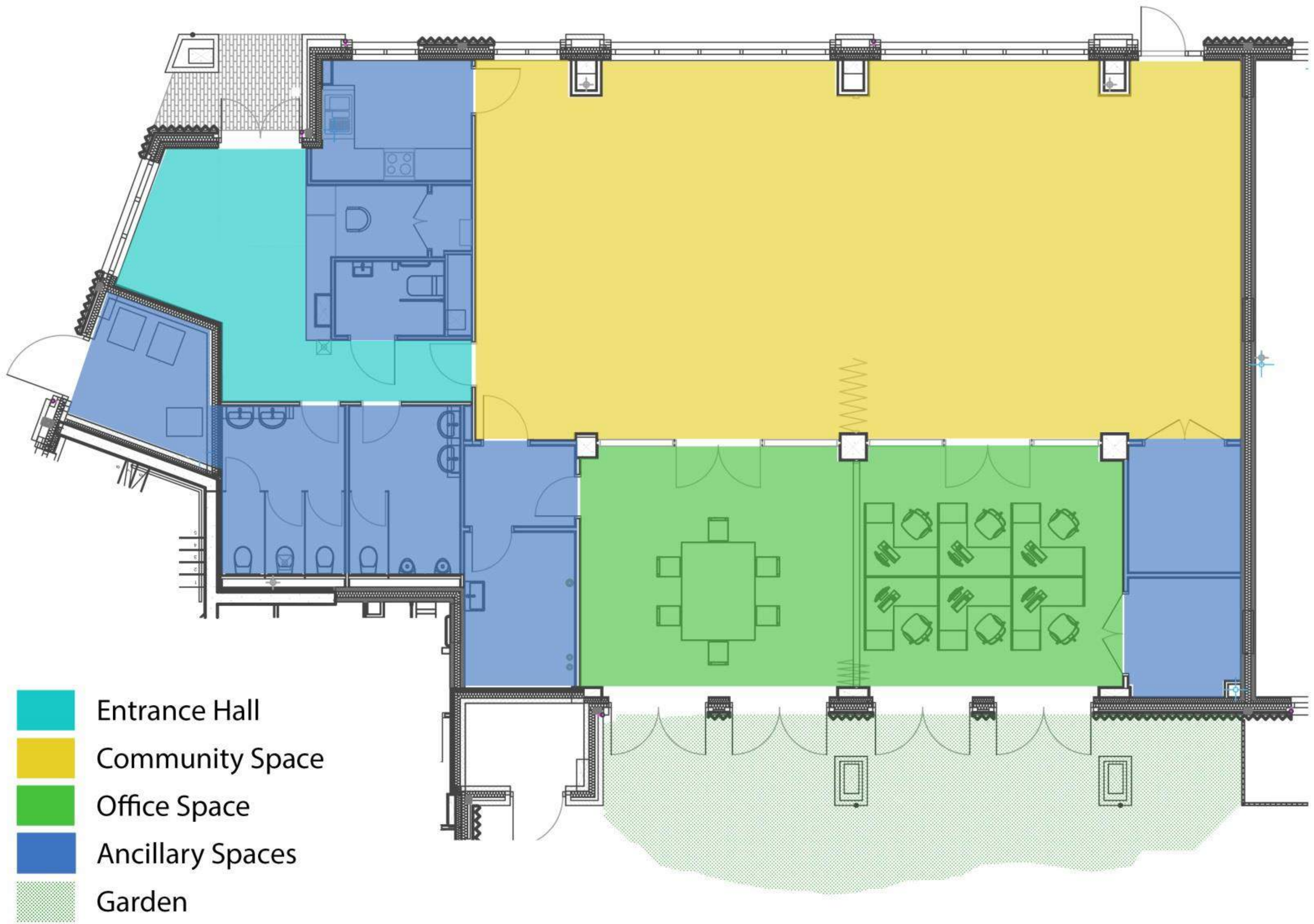
Mezzanine extension has been agreed with developer: additional mezzanine floor area of 55sqm over the office area with stair and platform lift access.

Facility has planning consent which is authorised to operate between 7am and 11pm daily

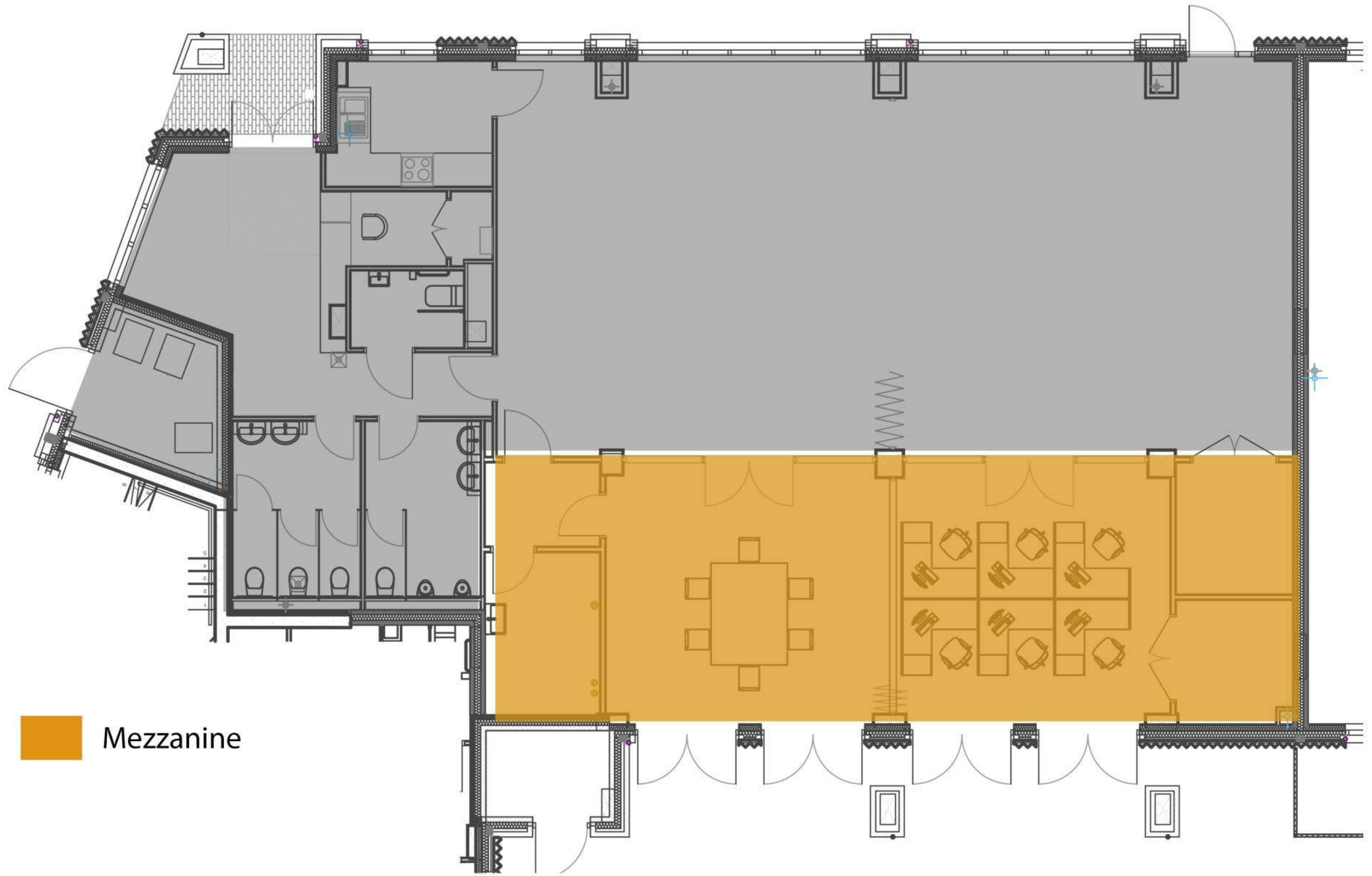








-  Entrance Hall
-  Community Space
-  Office Space
-  Ancillary Spaces
-  Garden



 Mezzanine

# THE GRIFFIN SPORTS GROUND

- The Griffin Sports Ground in Dulwich Village
- Acquired on 30 year lease by consortium of Mentivity, London Youth Sport Trust, Lambeth Tigers and Dulwich Cricket Club
- Year Round Sporting Offer - Football and Cricket
- Mentivity Alternative Provision
- Ground to be redeveloped through Mentivity network in the construction sector via corporate social responsibility
- Mentivity Community Hub 2



# THE GRIFFIN SPORTS GROUND



# MENTIVITY X LAMBETH TIGERS FC



“A PLACE AND SPACE FOR ALL”  
MENTIVITY COMMUNITY HUB 1

MENTIVITY AND ACTIVE COMMUNITIES NETWORK



# ACTIVE COMMUNITIES NETWORK

Active Communities Network is a sport for development charity which uses sport as a pathway into education, training and employment

Founded in 2006, the charity has grown in stature, delivering projects across all regions of the UK, in South Africa and supporting local partners across five continents.

ACN focus on Tackling Poverty, Creating Opportunities, Inspiring Change.

ACN are our training, development and capacity building partner.

We are also part of the Gamechanger Consortium which has received funds from My Ends to deliver work to prevent violence in our communities over the next two years





# OUR DIVERSE OFFER

As part of our inclusive offer to the community we will offer activities and support in five key areas:

1. Inclusion
2. Education & Attainment
3. Happiness, Health & Wellbeing
4. Culture & Connectedness
5. Civic Responsibility



# MENTIVITY CORE OFFER AND USAGE

- Alternative Educational Provision in partnership with Southwark Secondary Schools
- Expansive, engaging curriculum focusing on educational rehabilitation and societal reintegration for high-risk YP
- Delivered Monday - Friday between 9am - 3pm for YP aged 12 - 19
- Providing a holistic educational offer in Walworth that is based on evidence of need via consultation and experience



# ACN CORE OFFER AND USAGE

Between 4pm - 9pm we'll provide priority access to groups working with:

- Young adults
- Our programmes working with leaders and volunteers in the community.
- Careers advice, job searches and one to one support sessions.



# ACN CORE OFFER AND ADDITIONAL USAGE

What this will look like:

- Out of school hours youth provision
- Engaging with the digital, arts and corporate sectors
- Training and life skills development
- Promoting the centre, its offer and brokering access to all
- Delivering capacity building support with groups and local residents
- The facility available for 7 days a week, 15 hours per day, for a total of 105 hours per week for additional community usage



# OUR COLLABORATIVE OFFER

Physical Activity, Exercise & Sport

Resident Led Activities and Meetings

Celebrations and Events

Youth Work

Cooking Workshops

Financial Literacy

Life Skills Sessions

Alternative "Informal" Education

Parental Forums

Arts & Digital Activities

Meet the Councillor

Screenings, Drama & Theatre

Play

Information, Advice & Guidance

Diversity Celebrations

Mentoring

Provision for Excluded Groups

Young Advisor Meetings & Events

Training & Skills Development

# SOCIAL VALUE

We will ensure that the facility is a “place and space for all” with a key focus on areas such as:

- Social inclusion and reducing inequalities
- Building a safer and more integrated community
- Better quality of life & reduced cost to NHS as a result
- Local decision-making led by the connected community. Sense of agency
- Activities at must seek to give back in the spirit of our philosophy



# OUTREACH & PARTNERSHIPS

- We can and will reach the collective, diverse community because of similar philosophies around our outreach work
- Both organisations are both constantly visible within Southwark
- Mentivity & ACN have not been centre based, we have an embedded presence in promoting and widening access within the community.
- This has been consistently achieved through sustained collaboration, adaptability and ingenuity



# OUTREACH & PARTNERSHIPS

- Some of our partners include the Metropolitan Police, Goldman Sachs, The National Lottery, Millwall Community Trust, The Premier League, MOPAC and more
- Our foundations are built on a peer approach mobilising existing networks of providers across a range of areas
- Allowing us to access and secure funding and match funding
- This will allow us to offer the space at an affordable, community rate to other groups and organisations





# COMMUNITY TRUST

- We have built extensive ties with the community as organisations over the last 5 and 14 years respectively
- As individuals, the bond is tied to our Walworth and Southwark residencies and through our work since the late 90's
- We are trusted, needed and connected.
- We understand the complexities and challenges of life in Southwark
- Mentivity and ACN actively engage the community without a dedicated facility
- This facility will increase our reach, influence and impact



# MENTIVITY - OUR APPROACH

## Hook Phase:

Covid Recovery, Youth Hub Engagement & Outreach Work

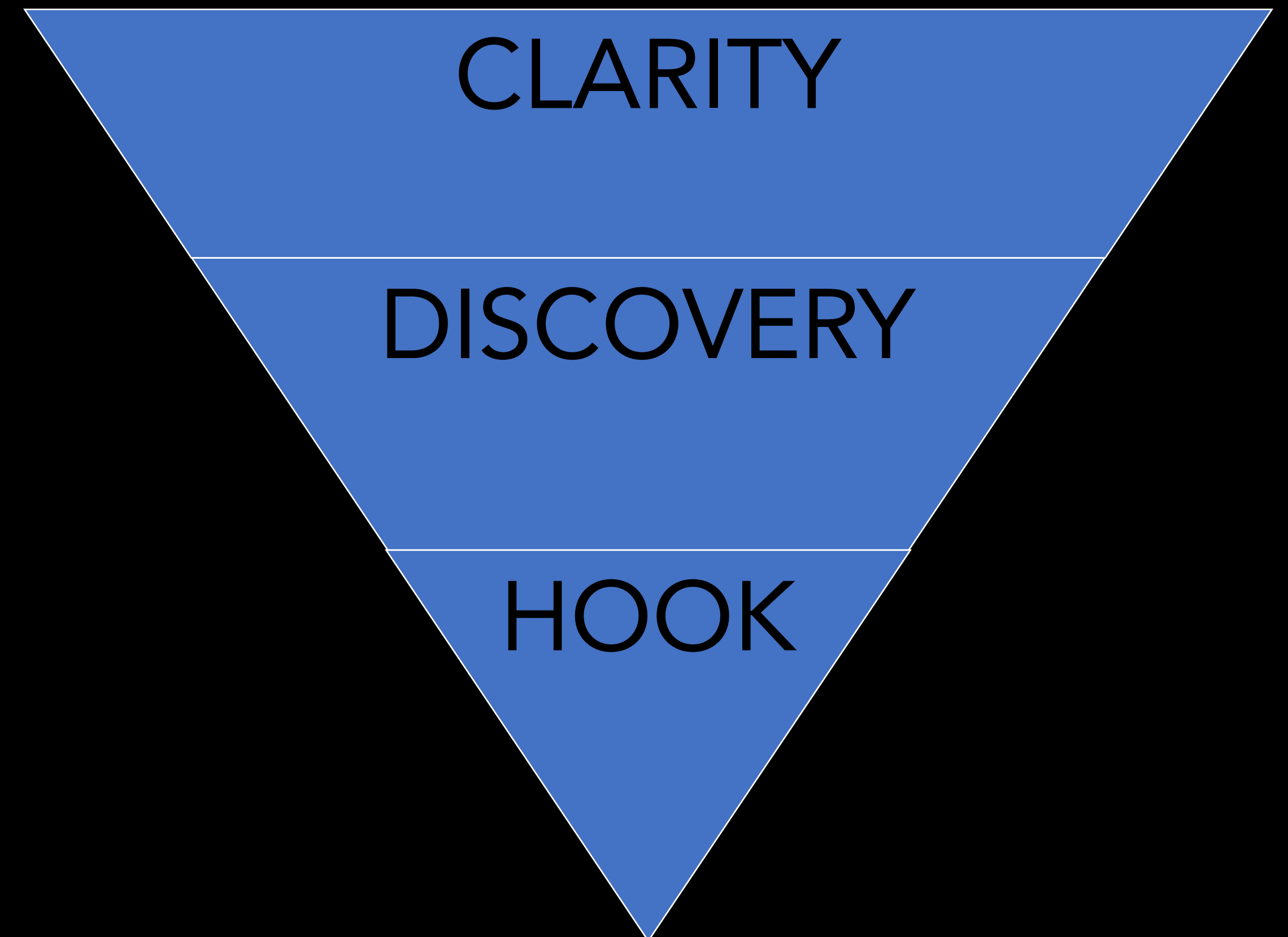
## Discovery Phase:

Early Intervention Mentoring, Conversation Based Learning, Alternative Education, Physical Activity, Careers Advice, Life Skills, Aspirational and Fun Trips

## Clarity Phase:

Raising Aspirations Project, Increased Focus, Community Engagement, Educational Attainment & Knowledge of Self

INCREASED CAREER VISION, LIFE FOCUS & EMPLOYMENT

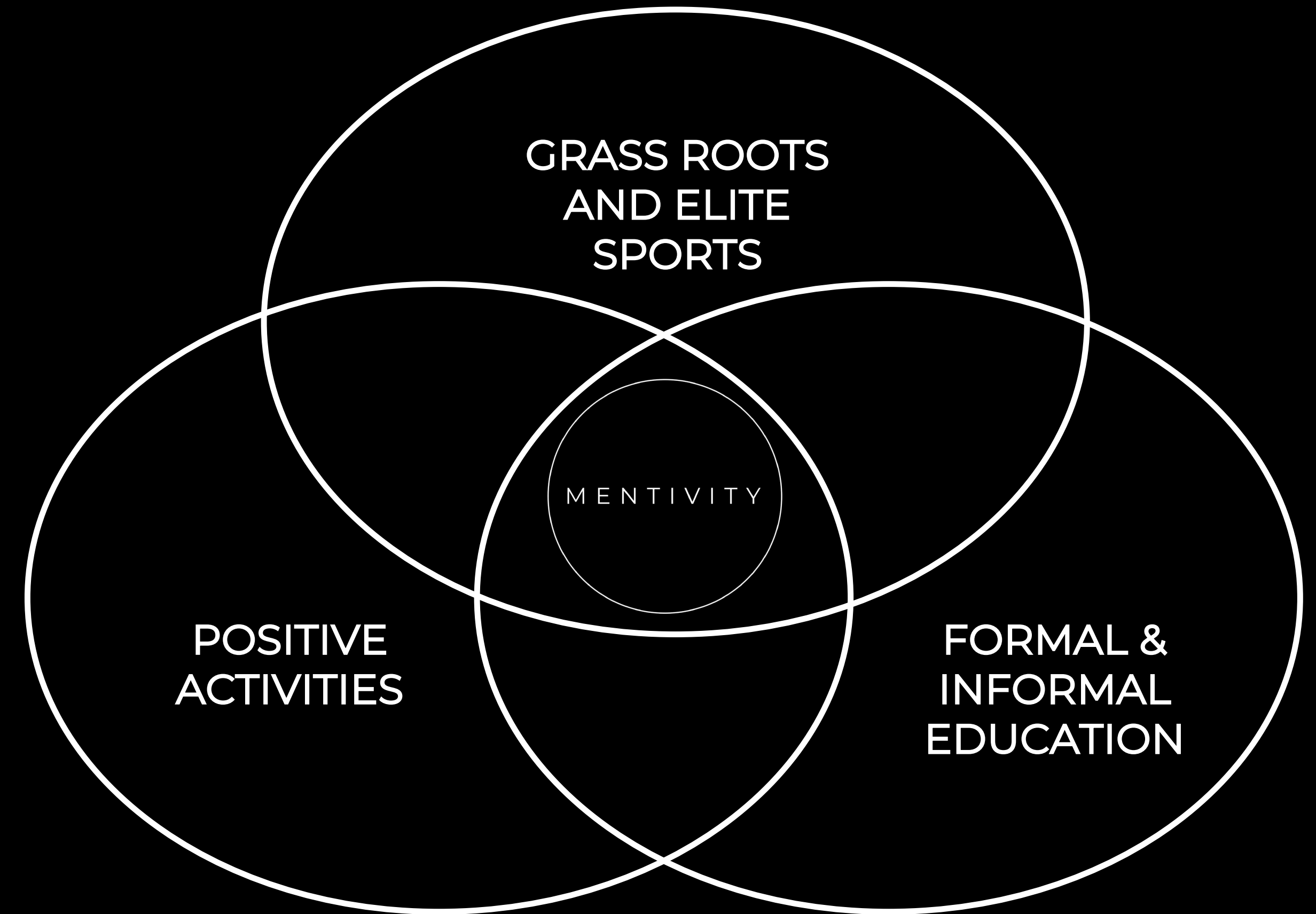


# WHAT DO WE DO?

We believe in incorporating a triangulated approach that promotes a bespoke, structured approach for each individual

We transform our mentees by use of exploring conversation based learning, inspirational workshops and aspirational visits

Enables young people to improve their educational engagement, personal responsibility and accountability

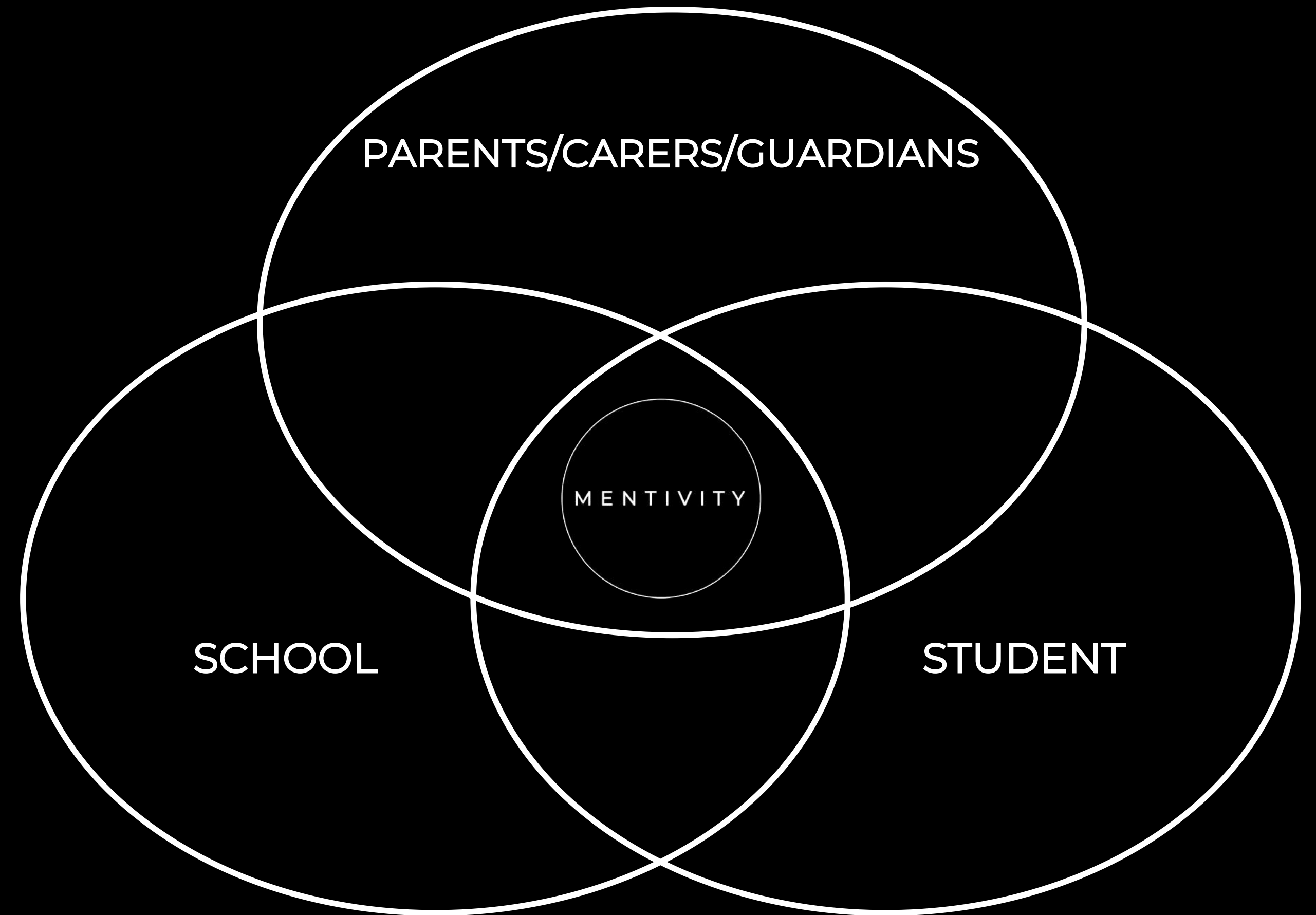


# WHAT DO WE DO?

We strategically place ourselves centrally between all relative parties i.e the educational institutions, parents/guardians and our mentees.

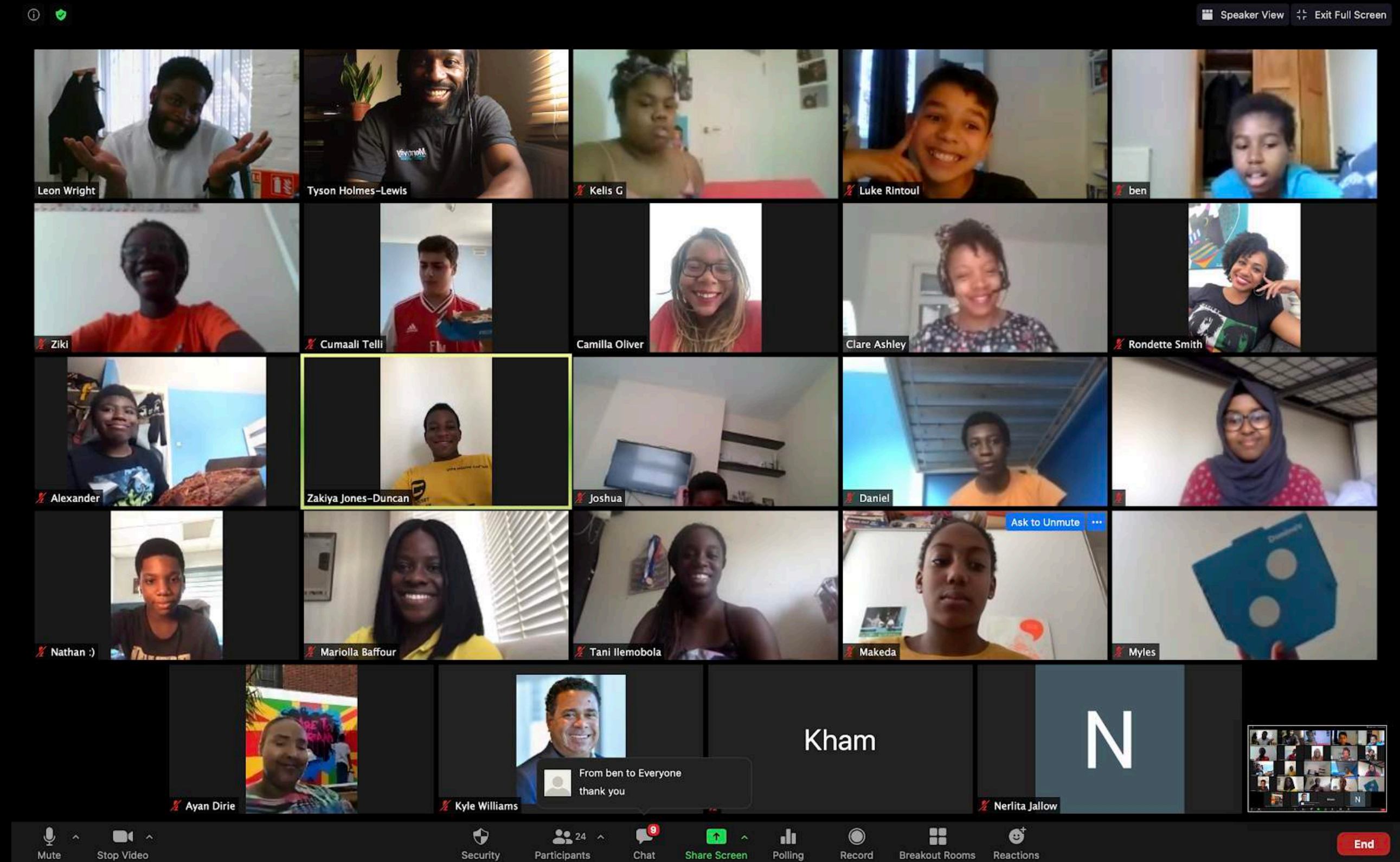
This allows us to provide a holistic service, central to the needs of our clients, young people and varying partner agencies

Sharing up to date and relevant information that would otherwise not be shared



# MENTIVITY X GOLDMAN SACHS PARTNERSHIP TIMELINE

- June 2018 - Commenced via Community Team Works event
- October 2019 - Invited six Mentivity mentees to attend BHM event with Colin Jackson
- February 2020 - Agreed to deliver Raising Aspirations Project pilot in April 2020 at two schools in North & South London
- March 2020 - U.K. Lockdown began due to COVID-19 pandemic. Reevaluated delivery strategy to deliver via Zoom
- May 2020 - Launched Raising Aspirations Project virtually with 112 students signed up - engaging 42 young people
- June 2020 - Mentivity awarded grant via Goldman Sachs Racial Equity Fund
- July 2020 - Launched second 4 week iteration of Raising Aspirations Project - engaging 25 young people
- October 2020 - Policing, Policy and Collective Action Panel Discussion
- December 2020 - Lockdown Dads: Parenting During the Pandemic Session. Hosted by Kyle Williams. Delivered by Sayce, Tyson and Leon







introduced by Kerry Epikema

introduced by Sally Boyle



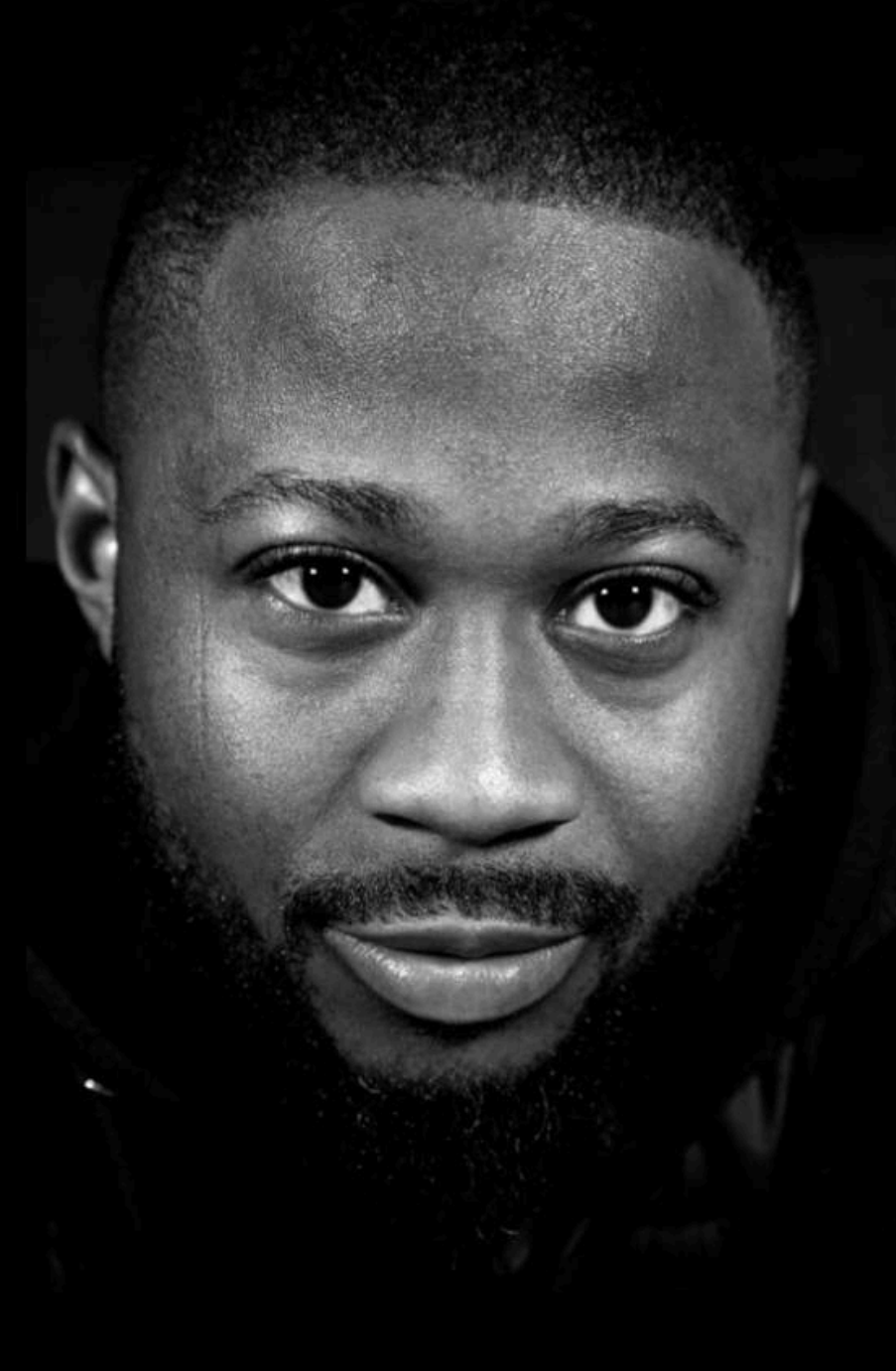












# WESTMORELAND ROAD COMMUNITY FACILITY

"A PLACE AND SPACE FOR ALL"

